

List of pages in this Trip Kit

Trip Kit Index

Airport Information For KBAB

Terminal Charts For KBAB

Revision Letter For Cycle 16-2023

Change Notices

Notebook

General Information

Location: MARYSVILLE CA USA
ICAO/IATA: KBAB / BAB
Lat/Long: N39° 08.17', W121° 26.20'
Elevation: 113 ft

Airport Use: Military
Daylight Savings: Observed
UTC Conversion: +8:00 = UTC
Magnetic Variation: 16.0° E
Sectional Chart: San Francisco

Fuel Types: Jet 4
Oxygen Types: LP Bottle
Repair Types: Major Airframe, Major Engine
Customs: Upon Prior Request
Airport Type: IFR
Landing Fee: No
Control Tower: Yes
Jet Start Unit: Yes
LLWS Alert: No
Beacon: Yes

Sunrise: 1334 Z
Sunset: 0237 Z

Runway Information

Runway: 15
Length x Width: 12001 ft x 300 ft
Surface Type: concrete
TDZ-Elev: 113 ft
Lighting: Edge, ALS
Stopway: 1000 ft

Runway: 33
Length x Width: 12001 ft x 300 ft
Surface Type: concrete
TDZ-Elev: 105 ft
Lighting: Edge, ALS
Stopway: 1000 ft

Communication Information

ATIS: 27.350 Military
ATIS: 124.550
Beale Tower: 28.475 Military
Beale Tower: 119.400

Beale Ground: 121.600

Beale Ground: 25.775 Military

Norcal Approach: 25.910 Military

Norcal Approach: 125.400

Norcal Airport Radar Service Area: 125.400

Norcal Airport Radar Service Area: 25.910 Military

Norcal Departure: 125.400

Norcal Departure: 25.910 Military

Beale Airlift Command Post: 31.100 Military

Beale Airlift Command Post: 32.100 Military

Beale Afb Operations: 141.100 At or below 15000 ft Out to 16 mi. Military

Beale Afb Operations: 37.220 Military

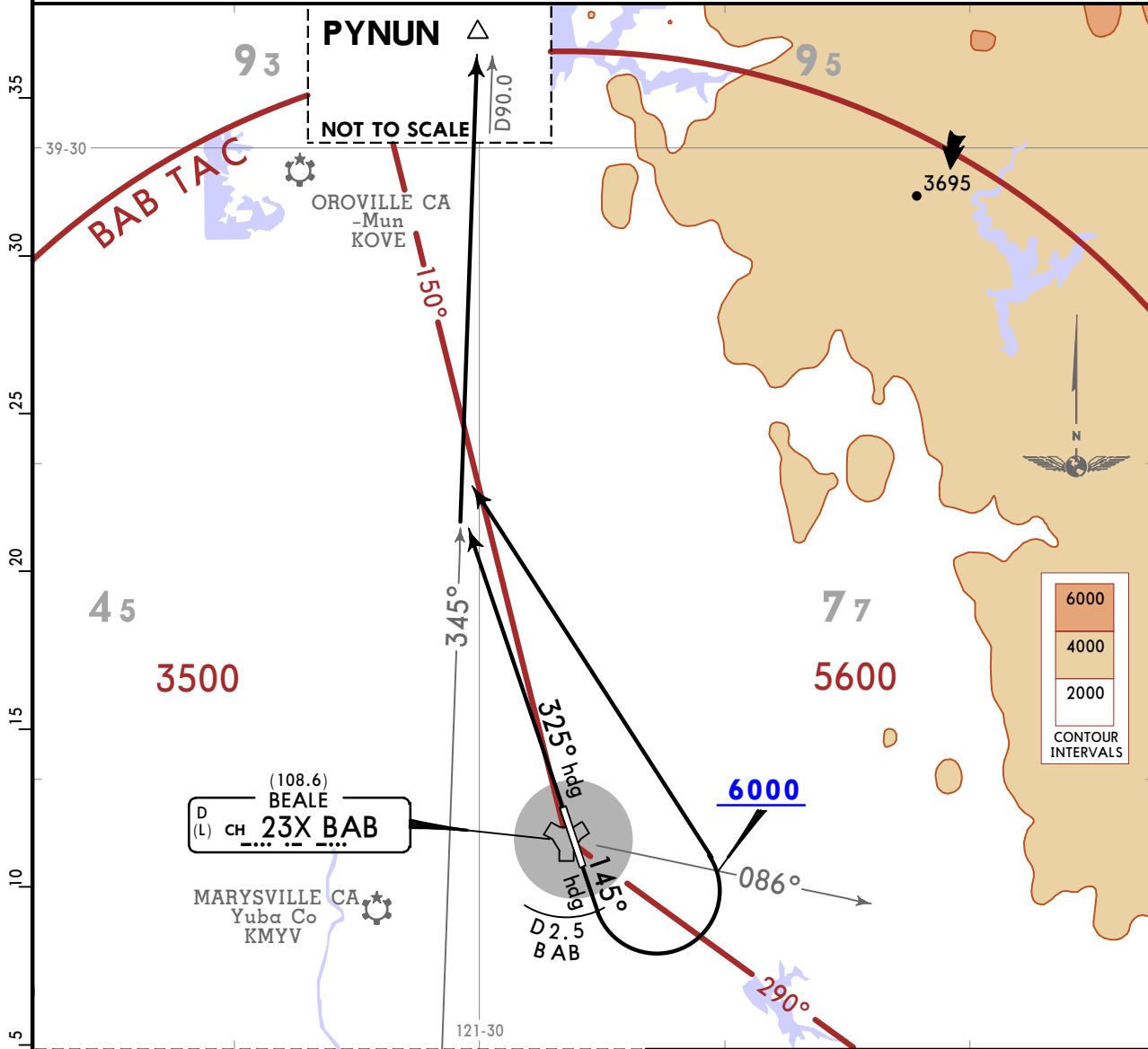
KBAB/BAB
MARYSVILLE, CALIF

JEPPESEN
22 JUL 22 **30-3**

BEALE AFB
SID

NORCAL Departure (R) 125.4 259.1	Apt Elev 113	Trans alt: 18000 1. TACAN Azimuth Required. 2. CAUTION: Pave Paws RADAR site located BAB R072/D4. 3. CAUTION: Pave Paws Phased Array RADAR SFC-6000. 4. For use by 9 RW aircraft only.
--	------------------------	---

PYNUN 6 DEPARTURE
(PYNUN6.PYNUN)
(ALL RWYS)



SACRAMENTO
115.2 SAC
CH 99X

BEALE
23X BAB

MARYSVILLE CA
Yuba Co
KMYV

OROVILLE CA
-Mun
KOVE

TAKEOFF OBSTACLE NOTES
Rwy 33: Terrain 62 from DER, 500 right of centerline, 118 MSL. Terrain 63 from DER, 517 right of centerline, 118 MSL. Aircraft tail 39 from DER, 533 right of centerline, 16 AGL/134 MSL. Aircraft tail 129 from DER, 525 right of centerline, 16 AGL/134 MSL.

This SID requires takeoff minimums (for standard minimums, refer to airport chart):
Rwy 15: Standard with minimum climb of 227 per NM to 3400. ATC minimum climb of 534 per NM to 6000.
Rwy 33: Standard.

***Minimum Climb Rate to 3400**

Rwy	Gnd speed-KT	75	100	150	200	250	300
15	V/V (fpm)	284	378	568	757	946	1135

***ATC Climb Rate to 6000**

Rwy	Gnd speed-KT	75	100	150	200	250	300
15	V/V (fpm)	668	890	1335	1780	2225	2670

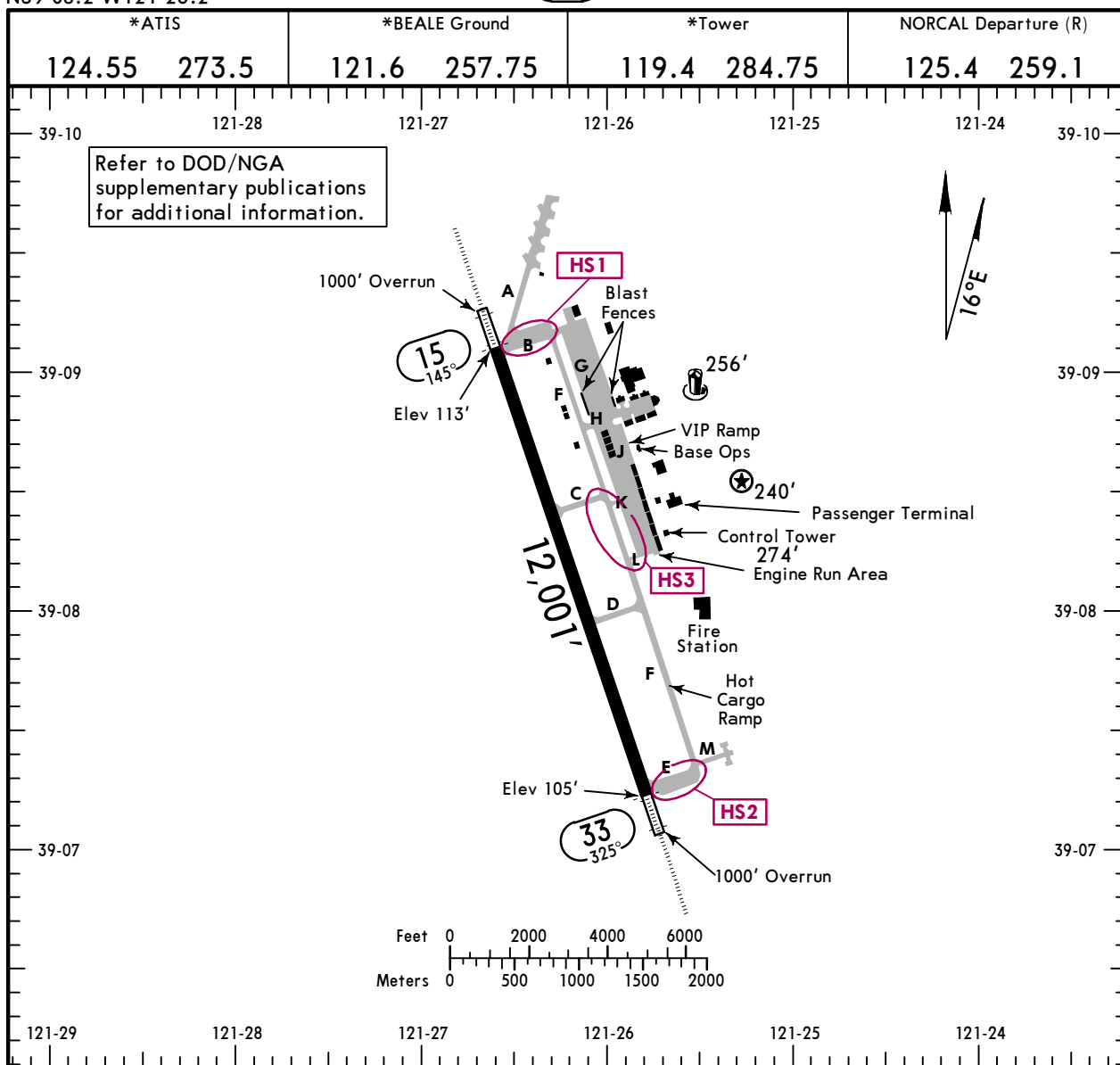
*Minimum climb rates are designed for obstacle clearance. ATC climb rates are designed for airspace utilization. The higher of the two gradients should be used within the altitude range(s) specified.

RWY	INITIAL CLIMB
15	Fly heading 145° until D2.5 BAB, turn LEFT intercept SAC R345 to PYNUN. Cross BAB R086 at or above 6000. Then via assigned route.
33	Fly heading 325° to intercept SAC R345 to PYNUN. Then via assigned route.

KBAB/BAB
 Apt Elev **113'**
 N39 08.2 W121 26.2

JEPPesen
 22 JUL 22 **(30-9)**

BEALE AFB
 MARYSVILLE, CALIF



ADDITIONAL RUNWAY INFORMATION						
RWY				USABLE LENGTHS		WIDTH
				LANDING BEYOND	TAKE-OFF	
	Threshold	Glide Slope	TAKE-OFF			
15 ^①	HIRL ALSF-I PAPI-L (angle 2.75°) grooved RVR			10,812'		② 200'
33	HIRL ALSF-I PAPI-L (angle 2.75°) grooved RVR			10,912'		

① Closed 0700-1700 LT first Saturday monthly. ② Rwy 300' wide marked at 200'.

RUNWAY INCURSION HOT SPOTS

For information only, not to be construed as ATC instructions

- HS1** Twy B, High-speed U-2 mobile traffic when Rwy 15 is in use.
- HS2** Twy E, High-speed U-2 mobile traffic when Rwy 33 is in use.
- HS3** Twy F, in the vicinity of Twys C, L, K, frequent U-2 and high speed mobile traffic. Slope of the taxiway limits visibility in both directions.

TAKE-OFF & OBSTACLE DEPARTURE PROCEDURE

All Rwys	
STD	
1 & 2 Eng	R50 or V1
3 & 4 Eng	R24 or V1/2

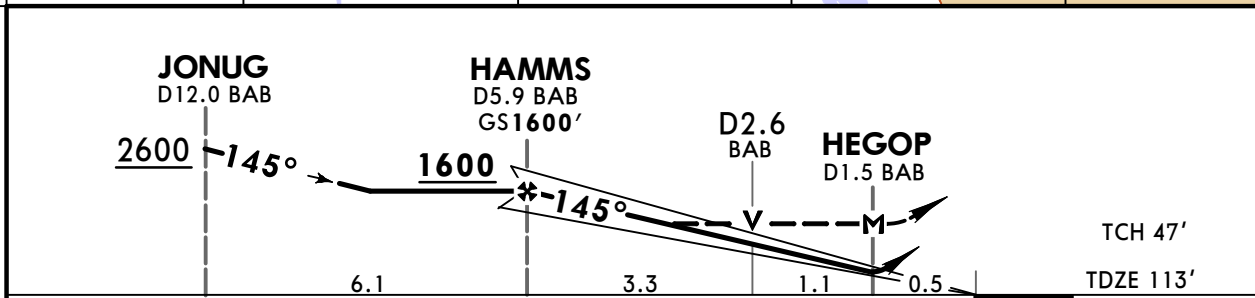
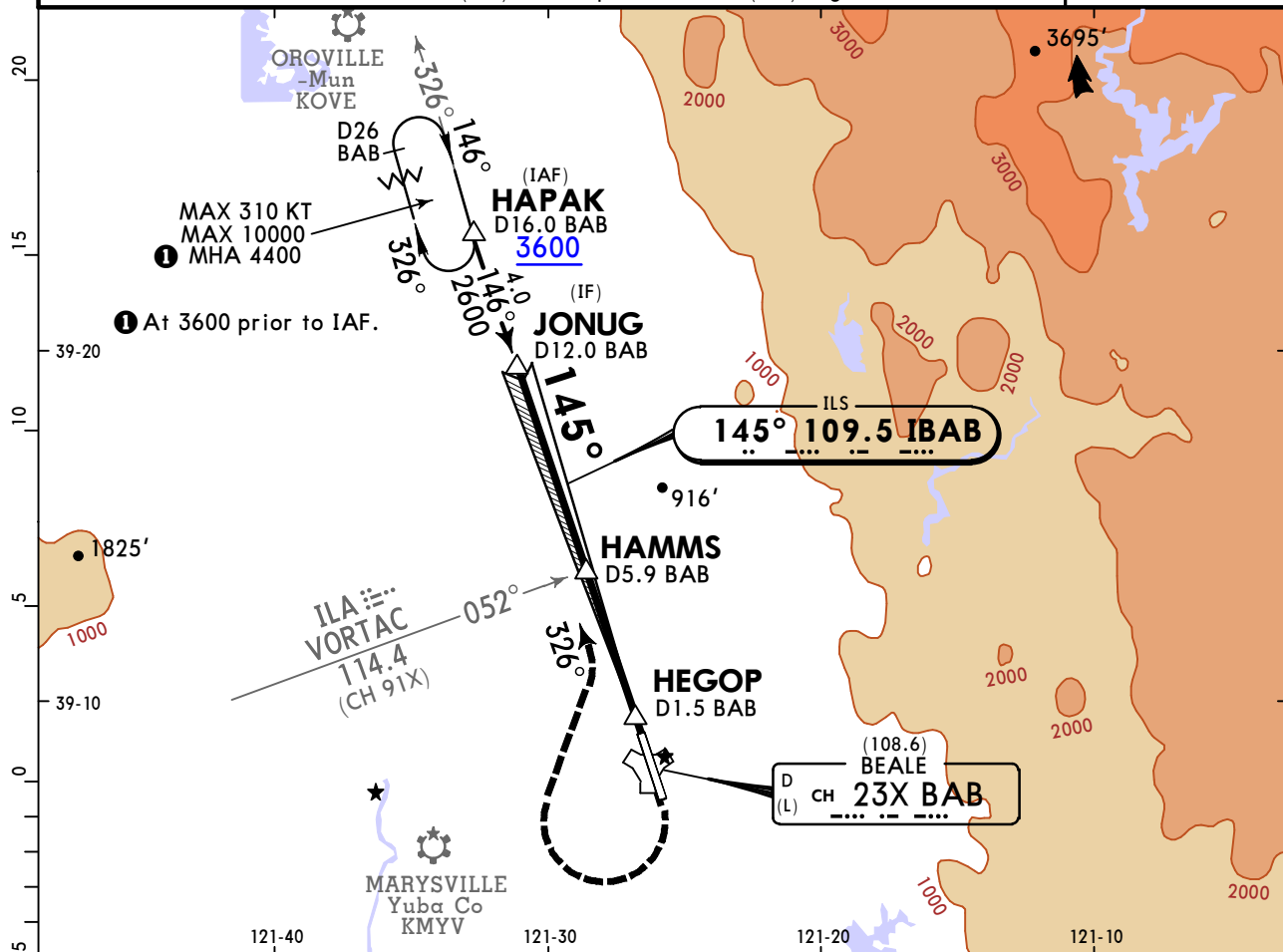
<p>TAKE-OFF OBSTACLES: Rwy 33, terrain 118' MSL, 62' from DER, 500' right of centerline. Terrain 118' MSL, 63' from DER, 517' right of centerline. Aircraft 16' AGL/134' MSL, 39' from DER, 533' right of centerline. Aircraft 16' AGL/134' MSL, 129' from DER, 525' right of centerline.</p>	<p>OBSTACLE DP: Rwy 15, Climb on a heading between 100° clockwise to 325° from DER. Rwy 33, Climb on a heading between 146° clockwise to 344° from DER.</p>
--	--

KBAB/BAB
MARYSVILLE, CALIF

JEPPESSEN
22 JUL 22 (31-1)

BEALE AFB
ILS or LOC Y Rwy 15

*ATIS 124.55 273.5		NORCAL Approach (R) 125.4 259.1		*BEALE Tower 119.4 284.75		*Ground 121.6 257.75	
LOC IBAB 109.5	Final Apch Crs 145°	HAMMS 1600' (1487')		ILS DA(H) 313' (200')	Apt Elev 113' TDZE 113'		
MISSED APCH: Climb to 4400' direct BAB TACAN. Turn RIGHT, to intercept BAB R-326 to HAPAK and hold, continue climb in hold to 4400'.							
Alt Set: INCHES		Trans level: FL 180		Trans alt: 18000'			
1. Radar or DME required. 2. EMERG SAFE ALT 100 NM 13,700'. 3. The difference between the VGSI TCH (53') and the procedure TCH (47') is greater than 3'.							



Gnd speed-Kts	70	90	100	120	140	160	ALSIF-I	4400'	D →	BAB CH 23X (108.6)
GS	2.75°	340	438	486	584	778				
MAP at HEGOP							PAPI			

Military				STRAIGHT-IN LANDING		CIRCLE-TO-LAND	
ILS		LOC (GS out)		Not Authorized East of Rwy 15-33			
DA(H) 313' (200')		MDA(H) 620' (507')					
FULL		ALS out		ALS out		Max Kts	
A						90	620' (507') 600'-V1
B	200'-	200'-	R24 or V1/2	R55 or V1		120	620' (507') 600'-V1 1/2
C	R24 or V1/2	R40 or V3/4				140	620' (507') 600'-V2
D			R55 or V1	V1 3/8		165	680' (567') 800'-V2 1/2
E						200	840' (727') 800'-V2 1/2

TERPS MIL (USAF) AMEND 5

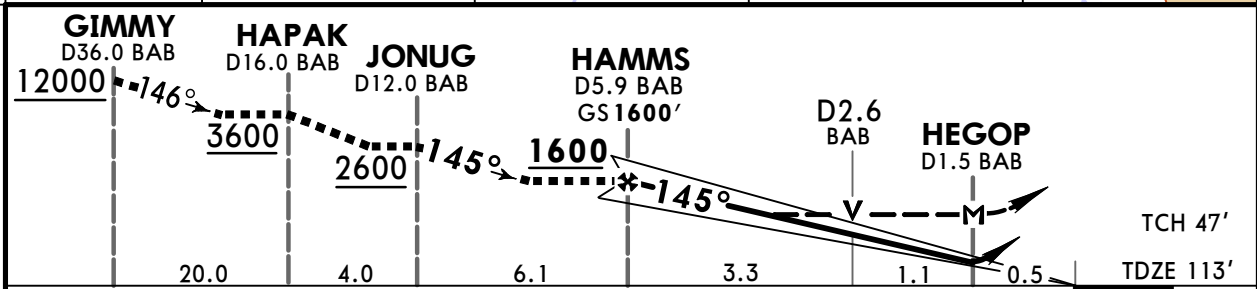
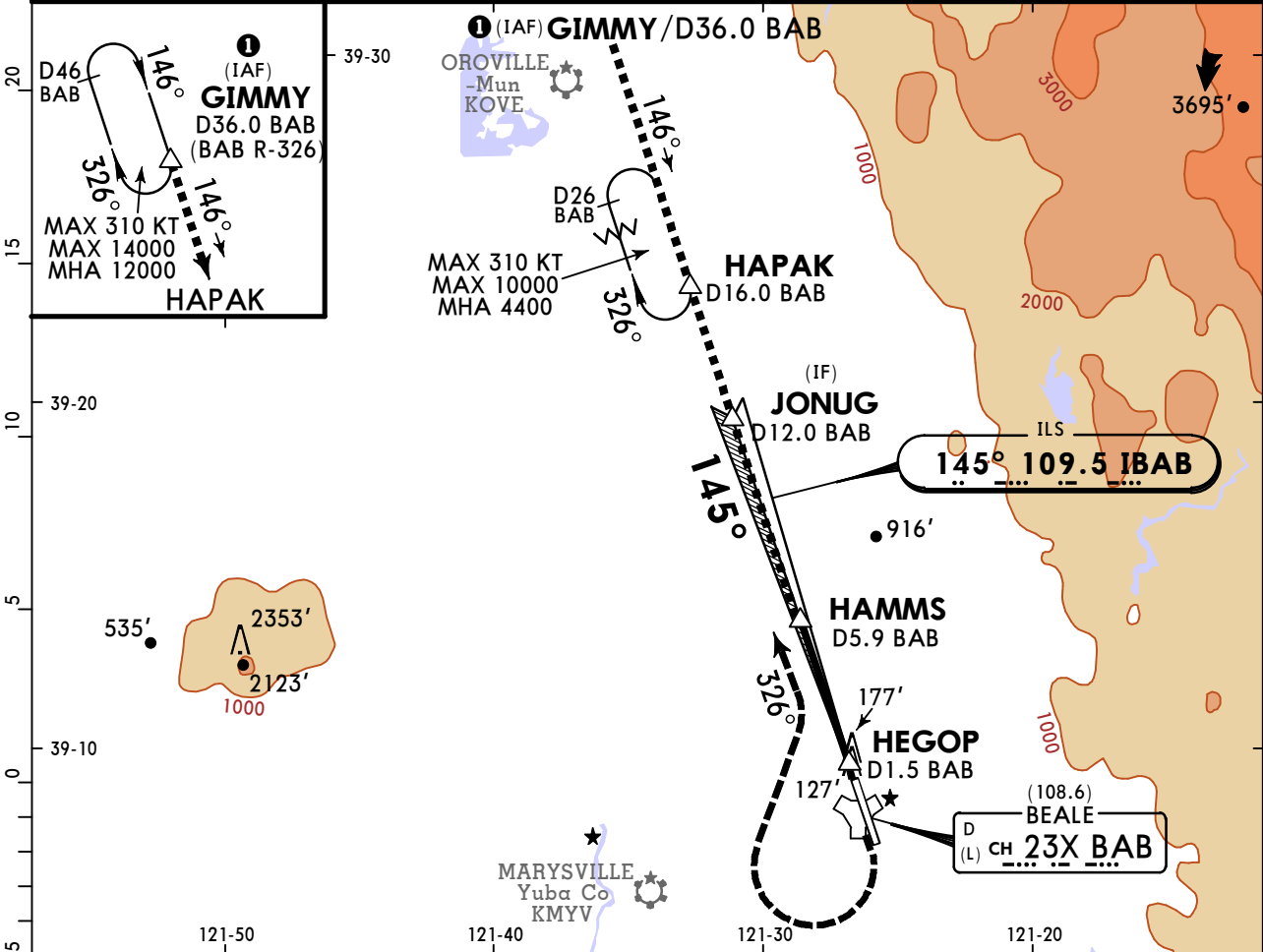
KBAB/BAB
MARYSVILLE, CALIF

22 JUL 22

JEPPESSEN
31-2 **CAT C, D & E**

BEALE AFB
HI-ILS or LOC Z Rwy 15

*ATIS		NORCAL Approach (R)		*BEALE Tower		*Ground	
124.55	273.5	125.4	259.1	119.4	284.75	121.6	257.75
LOC IBAB 109.5	Final Apch Crs 145°	HAMMS 1600' (1487')	ILS DA(H) 313' (200')	Apt Elev 113' TDZE 113'			
MISSED APCH: Climb to 4400' direct BAB TACAN. Turn RIGHT to intercept BAB R-326 to HAPAK and hold, continue climb in hold to 4400'.							MSA BAB TACAN
Alt Set: INCHES		Trans level: FL 180		Trans alt: 18000'			
1. Radar or DME required. 2. EMERGENCY SAFE ALT 100 NM 13,700'. 3. The difference between the VGSI TCH (53') and the procedure TCH (47') is greater than 3'.							



Gnd speed-Kts	70	90	100	120	140	160	ALSF-I	4400'	D	BAB CH 23X (108.6) R-326
GS	2.75°	340	438	486	584	681				
MAP at HEGOP										
HAMMS to MAP	4.4	3:46	2:56	2:38	2:12	1:53				

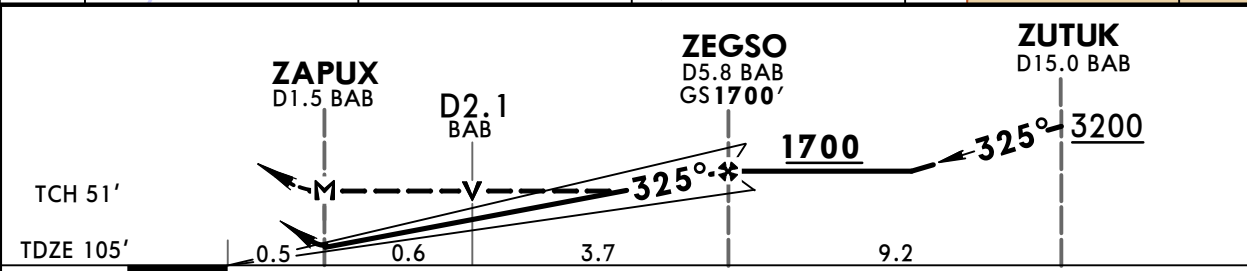
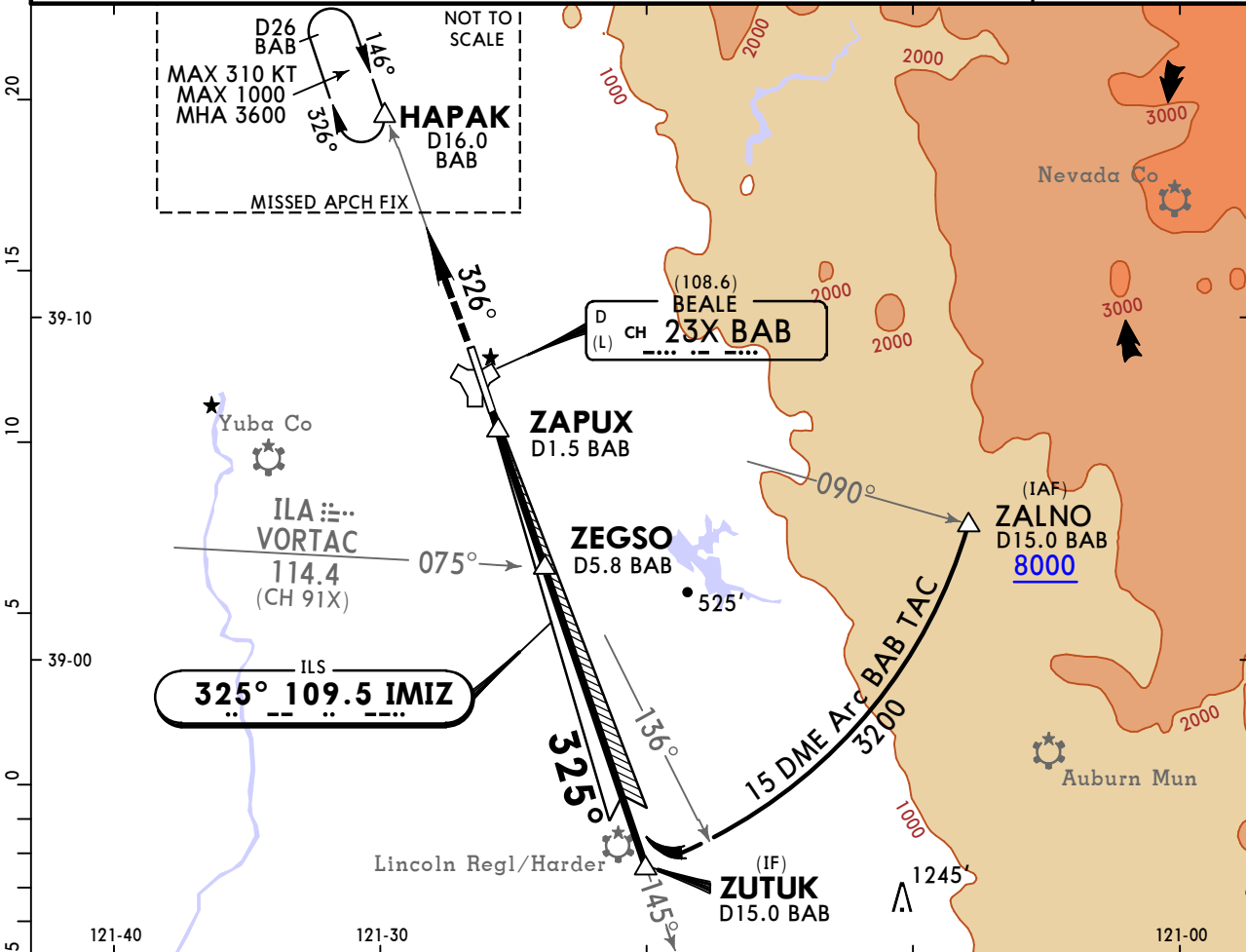
Military				STRAIGHT-IN LANDING				CIRCLE-TO-LAND				
ILS		LOC (GS out)		Not Authorized		Not Authorized		Not Authorized		Not Authorized		
DA(H) 313' (200')		MDA(H) 620' (507')		East of Rwy 15-33		East of Rwy 15-33		East of Rwy 15-33		East of Rwy 15-33		
FULL		ALS out		ALS out		ALS out		ALS out		ALS out		
A/B	NOT APPLICABLE			NOT APPLICABLE			NOT APPLICABLE			NOT APPLICABLE		
C	200'-R24 or V1/2			200'-R40 or V3/4			600'-R55 or V1			140 620' (507') 600'-V1 1/2		
D										165 680' (567') 600'-V2		
E										200 840' (727') 800'-V2 1/2		

KBAB/BAB
MARYSVILLE, CALIF

JEPPESSEN
22 JUL 22 (31-3)

BEALE AFB
ILS or LOC Y Rwy 33

BRIEFING STRIP™	*ATIS 124.55 273.5		NORCAL Approach (R) 125.4 259.1		*BEALE Tower 119.4 284.75		*Ground 121.6 257.75		
	LOC IMIZ 109.5	Final Apch Crs 325°	ZEGSO 1700' (1595')		ILS DA(H) 305' (200')	Apt Elev 113' TDZE 105'		<p>MSA BAB TACAN</p>	
	MISSED APCH: Climb to 3600' intercept BAB TACAN R-326 to HAPAK and hold.								
	Alt Set: INCHES				Trans level: FL 180		Trans alt: 18000'		
1. Radar or DME required. 2. EMERG SAFE ALT 100 NM 13,700'.									



Gnd speed-Kts	70	90	100	120	140	160	ALSFI	3600'	BAB CH 23X (108.6) R-326	HAPAK
GS	3.00°	372	478	531	637	849				
MAP at ZAPUX										

TERPS MIL (USAF) AMEND 5	Military				STRAIGHT-IN LANDING		CIRCLE-TO-LAND	
	ILS		LOC (GS out)		Not Authorized East of Rwy 15-33 MDA(H) _____			
	DA(H) 305' (200')		MDA(H) 520' (415')					
	FULL		ALS out		Max Kts	MDA(H)		
	A					90		600' (487') 500'-V1
B	200'-R24 or V1/2		200'-R40 or V3/4		120	600' (487') 500'-V1 1/2		
C					140	680' (567') 600'-V2		
D					165	840' (727') 800'-V2 1/2		
E					200			

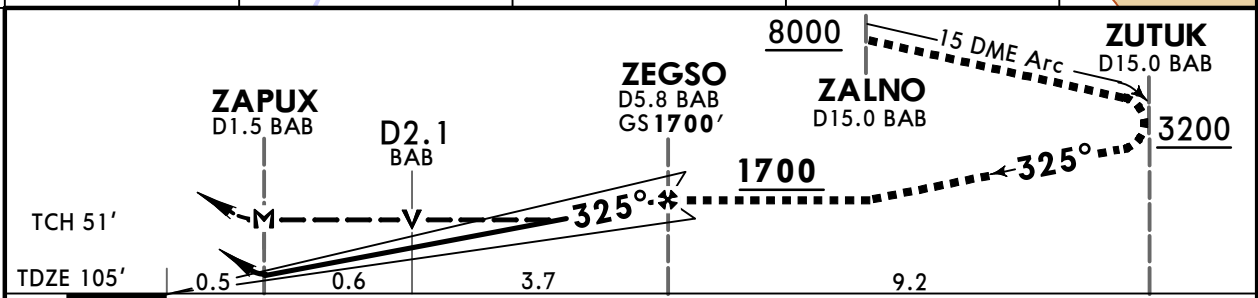
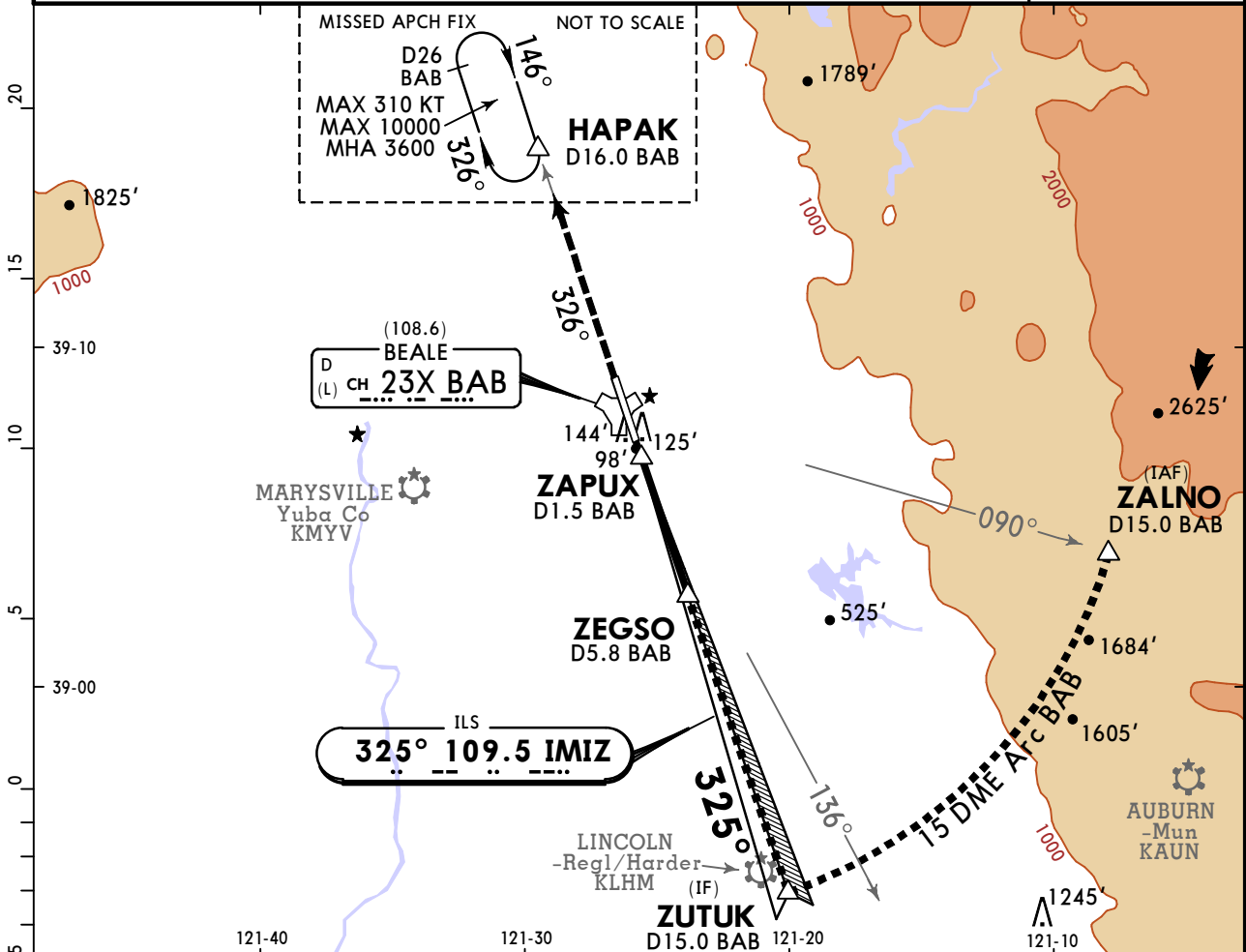
KBAB/BAB
MARYSVILLE, CALIF

22 JUL 22

JEPPESSEN
(31-4) CAT C, D & E

BEALE AFB
HI-ILS or LOC Z Rwy 33

*ATIS		NORCAL Approach (R)		*BEALE Tower		*Ground	
124.55	273.5	125.4	259.1	119.4	284.75	121.6	257.75
LOC IMIZ	Final Apch Crs	ZEGSO		ILS DA(H)	Apt Elev 113'		
109.5	325°	1700' (1595')		305' (200')	TDZE 105'		
MISSED APCH: Climb to 3600' intercept BAB TACAN R-326 to HAPAK and hold.							MSA BAB TACAN
Alt Set: INCHES		Trans level: FL 180		Trans alt: 18000'			
1. Radar or DME required. 2. EMERGENCY SAFE ALT 100 NM 13,700'.							



Gnd speed-Kts	70	90	100	120	140	160	ALSF-I PAPI 	3600' ↑	BAB CH 23X (108.6) R-326	HAPAK
GS	3.00°	372	478	531	637	743				
MAP at ZAPUX										
ZEGSO to MAP	4.3	3:41	2:52	2:35	2:09	1:51	1:37			

Military		STRAIGHT-IN LANDING				CIRCLE-TO-LAND	
		ILS DA(H) 305' (200')		LOC (GS out) MDA(H) 520' (415')		Not Authorized East of Rwy 15-33	
		FULL	ALS out	ALS out	Max Kts A/B MDA(H)		
A/B		NOT APPLICABLE		NOT APPLICABLE		NOT APPLICABLE	
C		200'- R24 or V1/2	200'- R40 or V3/4	500'- R40 or V3/4	500'- R60 or V1 1/8	140	600' (487') 500'- V1 1/2
D						165	680' (567') 600'- V2
E						200	840' (727') 800'- V2 1/2

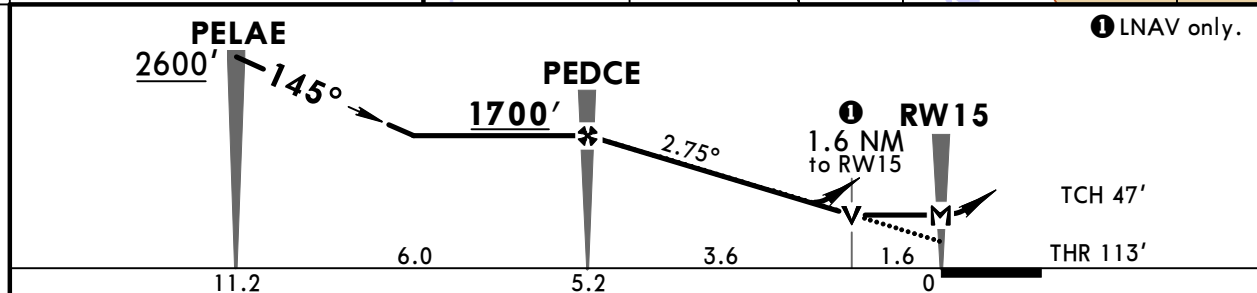
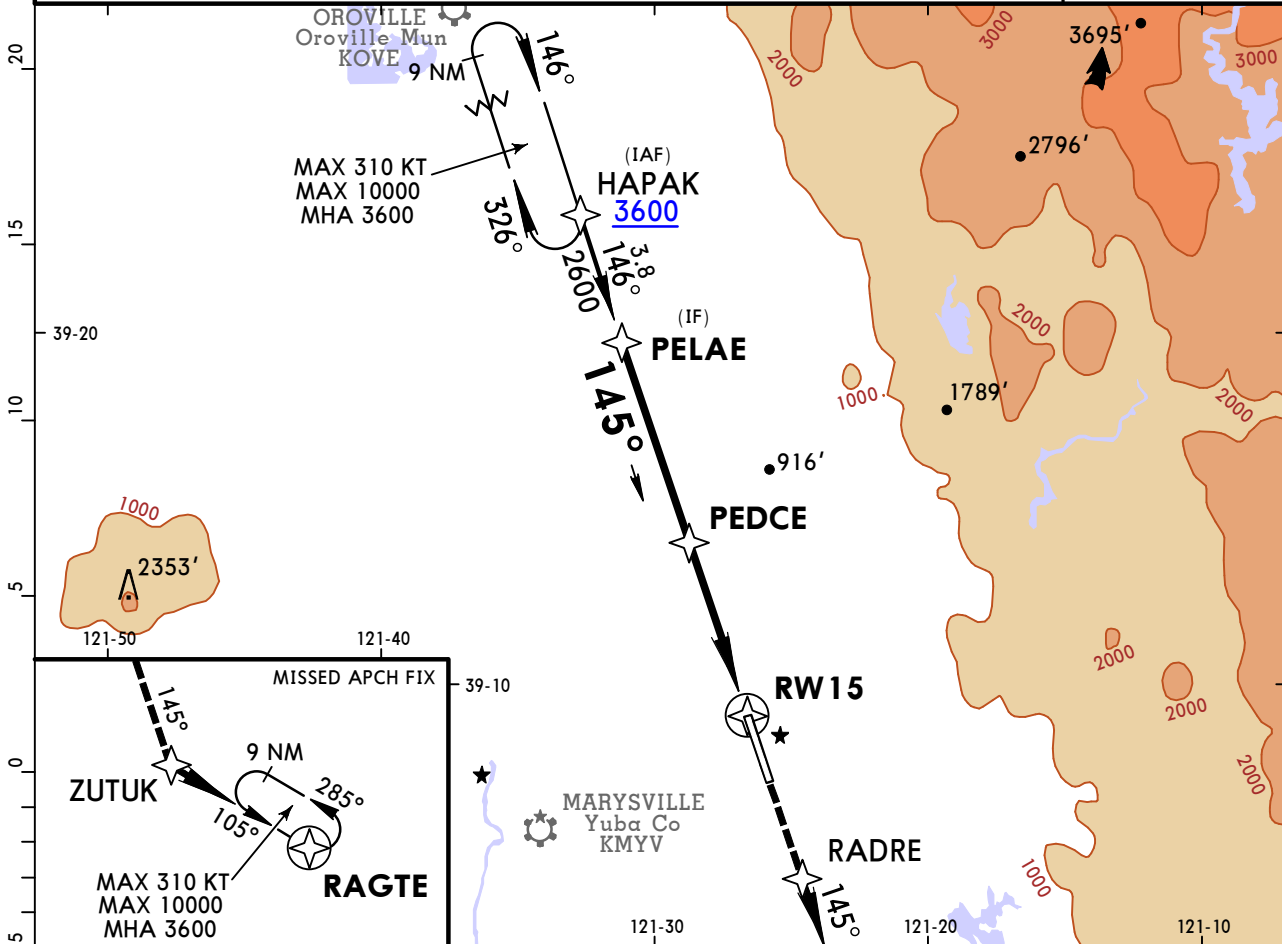
TERPS MIL (USAF) AMEND 6

KBAB/BAB
MARYSVILLE, CALIF

JEPPESSEN
22 JUL 22 (32-1)

BEALE AFB
RNAV (GPS) Rwy 15

*ATIS 124.55 273.5		NORCAL Approach (R) 125.4 259.1		*BEALE Tower 119.4 284.75		*Ground 121.6 257.75	
RNAV	Final Apch Crs 145°	PEDCE 1700' (1587')		LNAV MDA(H) 620' (507')		Apt Elev 113'	<p>5600 •3623' MSA RW15</p>
MISSED APCH: Climb direct RADRE, then track 145° to ZUTUK, then turn LEFT and track 105° to RAGTE and hold.							
Alt Set: INCHES Trans level: FL 180 Trans alt: 18000' 1. EMERG SAFE ALT 100 NM 13,700'. 2. DME/DME RNP-0.3 not authorized. 3. Baro-VNAV not authorized below -15°C (5°F).							



ALS F-I	↑	→	RADRE
PAPI	↑	→	
MAP at RW15			

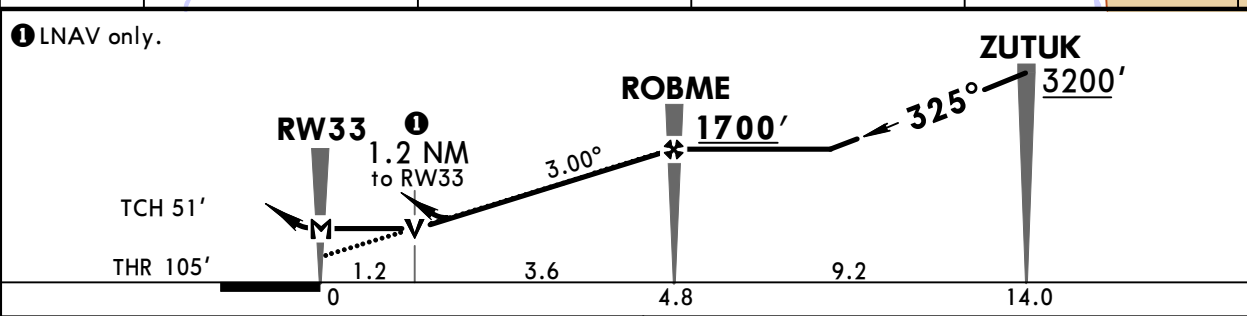
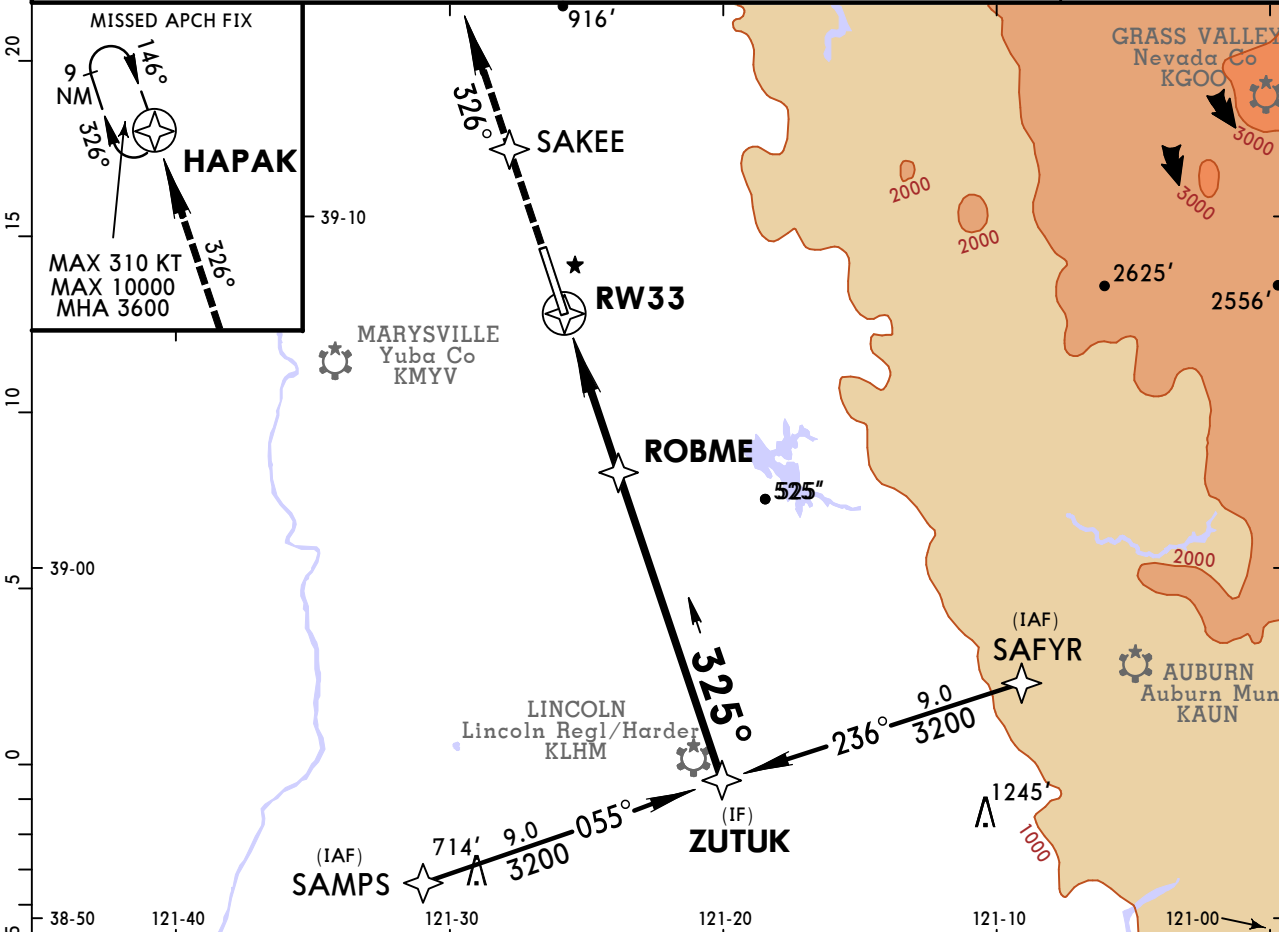
TERPS MIL (USAF) AMEND 5	Military				STRAIGHT-IN LANDING		CIRCLE-TO-LAND	
	LNAV/VNAV		LNAV		Not Authorized East of Rwy 15/33		Max Kts	MDA(H)
	DA(H) 680' (567')		MDA(H) 620' (507')					
	ALS out		ALS out		90	620' (507') 600'-V1		
	A	600'-		600'-		120	640' (527') 600'-V1	
	B	600'-		600'-		140	660' (547') 600'-V1 1/2	
C	V1 5/8	V2 1/2	600'-	600'-	165	680' (567') 600'-V2		
D			R24 or V1/2	R55 or V1	200	840' (727') 800'-V2 1/2		
E			R55 or V1	V1 3/8				

KBAB/BAB
MARYSVILLE, CALIF

JEPPESSEN
22 JUL 22 **(32-2)**

BEALE AFB
RNAV (GPS) Rwy 33

*ATIS 124.55 273.5		NORCAL Approach (R) 125.4 259.1		*BEALE Tower 119.4 284.75		*Ground 121.6 257.75	
RNAV	Final Apch Crs 325°	ROBME 1700' (1595')		LNAV MDA(H) 540' (435')		Apt Elev 113' THR 105'	5600 MSA RW33
MISSED APCH: Climb direct SAKEE, then track 326° to HAPAK and hold.							
Alt Set: INCHES Trans level: FL 180 Trans alt: 18000' 1. EMERG SAFE ALT 100 NM 13,700'. 2. DME/DME RNP-0.30 not authorized.							



Gnd speed-Kts	70	90	100	120	140	160	ALSIF-I PAPI	↑	D→	SAKEE
Descent Angle	3.00°	372	478	531	637	849				
MAP at RW33										

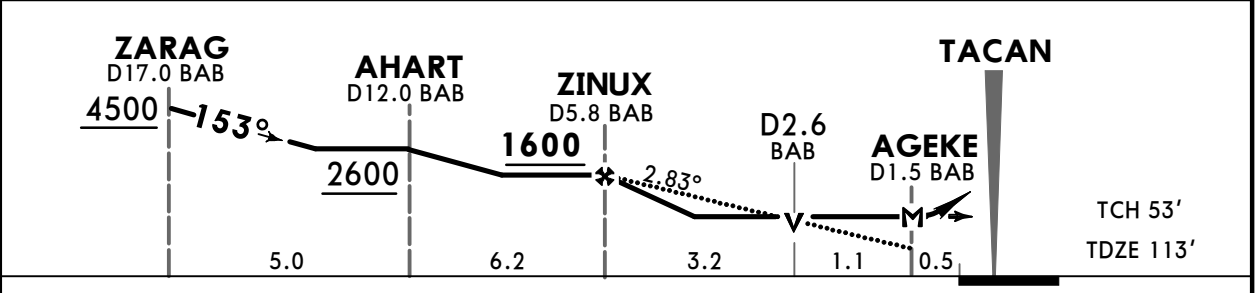
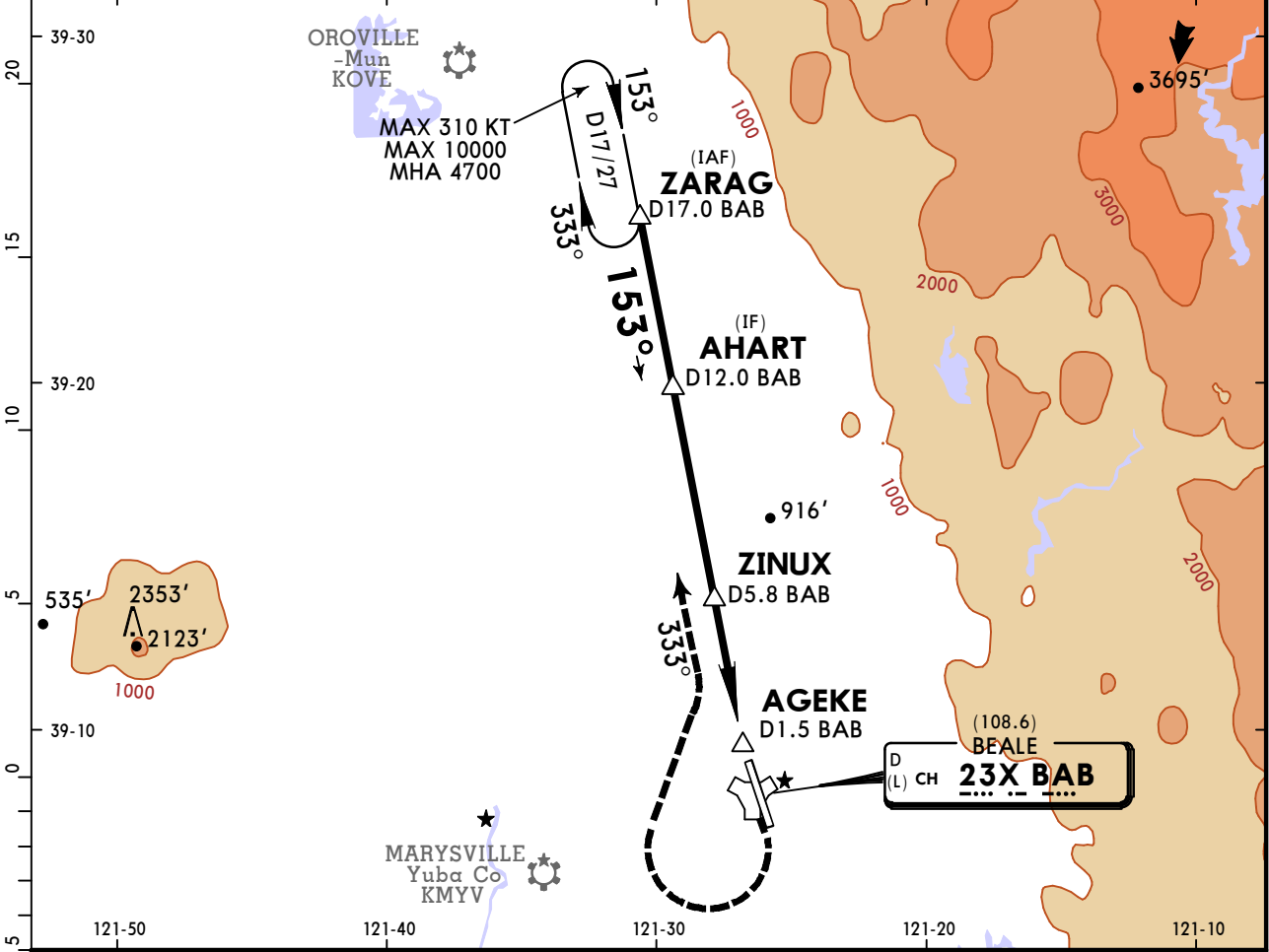
Military				STRAIGHT-IN LANDING		CIRCLE-TO-LAND		
LNAV/VNAV		LNAV		Not Authorized East of Rwy 15/33		C		
DA(H) 640' (535')		MDA(H) 540' (435')		Max Kts		MDA(H)		
ALS out		ALS out		90	600' (487')		500'-V1	
A			500'-R24 or V1/2	500'-R55 or V1	120	640' (527')		600'-V1
B	600'-	600'-			140	660' (547')		600'-V1 1/2
C	V1 3/8	V1 7/8	500'-R40 or V3/4	500'-V1 1/4	165	680' (567')		600'-V2
D								

KBAB/BAB
MARYSVILLE, CALIF



BEALE AFB
TACAN Y Rwy 15

*ATIS 124.55 273.5		NORCAL Approach (R) 125.4 259.1		*BEALE Tower 119.4 284.75		*Ground 121.6 257.75	
TACAN BAB CH 23X (108.6)	Final Apch Crs 153°	ZINUX 1600 (1487')	MDA(H) 640' (527')	Appt Elev 113'	TDZE 113'		
MISSED APCH: Climb to 4700' direct BAB TACAN. Turn RIGHT to intercept BAB R-333 to ZARAG/D17.0 BAB and hold, continue climb in hold to 4700'.							MSA BAB TACAN
Alt Set: INCHES		Trans level: FL 180		Trans alt: 18000'			
1. EMERGENCY SAFE ALT 100 NM 13,700'.							



Gnd speed-Kts	70	90	100	120	140	160	ALSIF-I PAPI	4700'	D →	BAB CH 23X (108.6) R-333
Descent Angle 2.83°	350	451	501	601	701	801				
MAP at AGEKE or ZINUX to MAP	4.3	3:41	2:52	2:35	2:09	1:51	1:37			

Military		STRAIGHT-IN LANDING		CIRCLE-TO-LAND	
		MDA(H) 640' (527')		Not Authorized East of Rwy 15-33	
		ALS out		Max Kts	
A	600'- R24 or V1/2	600'- R55 or V1	90	640' (527') 600'- V1	
B			120		
C			140	640' (527') 600'- V1 1/2	
D	600'- R55 or V1	600'- V1 1/2	165	680' (567') 600'- V2	
E			200	840' (727') 800'- V2 1/2	

KBAB/BAB

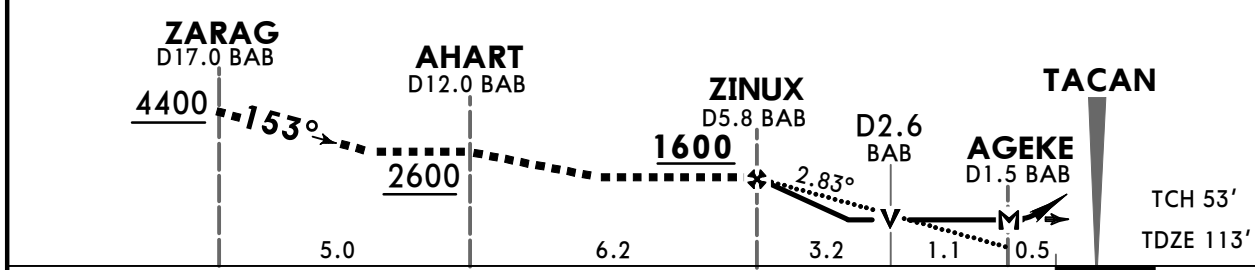
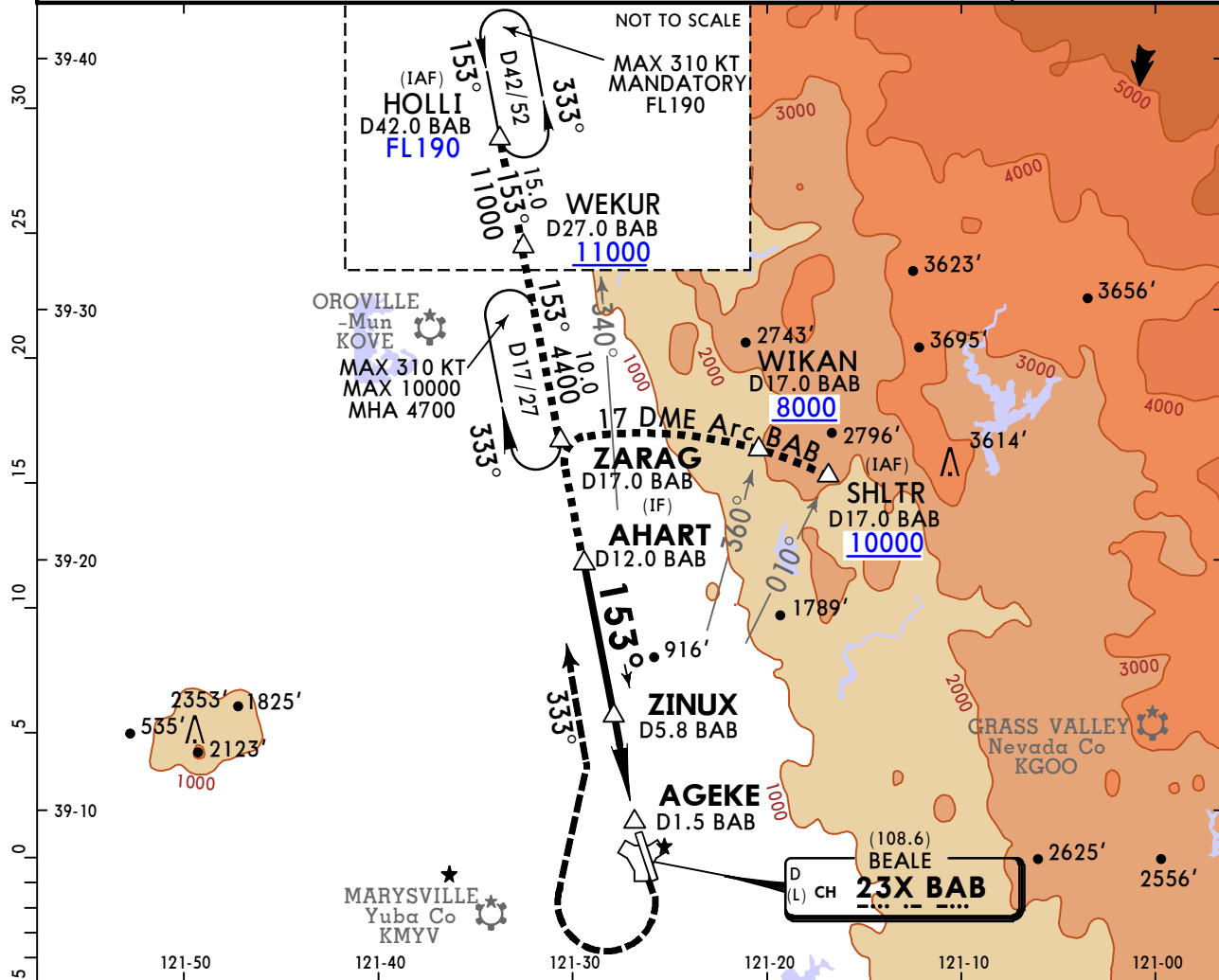
MARYSVILLE, CALIF

18 SEP 20 **34-2** **CAT C, D & E**

BEALE AFB

HI-TACAN Z Rwy 15

*ATIS 124.55 273.5		NORCAL Approach (R) 125.4 259.1		*BEALE Tower 119.4 284.75		*Ground 121.6 257.75	
TACAN BAB CH 23X (108.6)	Final Apch Crs 153°	ZINUX 1600 (1487')	MDA(H) 640' (527')	Apt Elev 113' TDZE 113'			
MISSED APCH: Climb to 4700' direct BAB TACAN. Turn RIGHT to intercept BAB R-333 to ZARAG/D17.0 BAB and hold, continue climb in hold to 4700'.						MSA BAB TACAN	
Alt Set: INCHES		Trans level: FL 180		Trans alt: 18000'			
1. EMERGENCY SAFE ALT 100 NM 13,700'.							



Gnd speed-Kts	70	90	100	120	140	160
Descent Angle 2.83°	350	451	501	601	701	801
MAP at AGEKE or ZINUX to MAP	4.3	3:41	2:52	2:35	2:09	1:51

ALSIF-I
PAPI

4700'

CH 23X
(108.6)
R-333

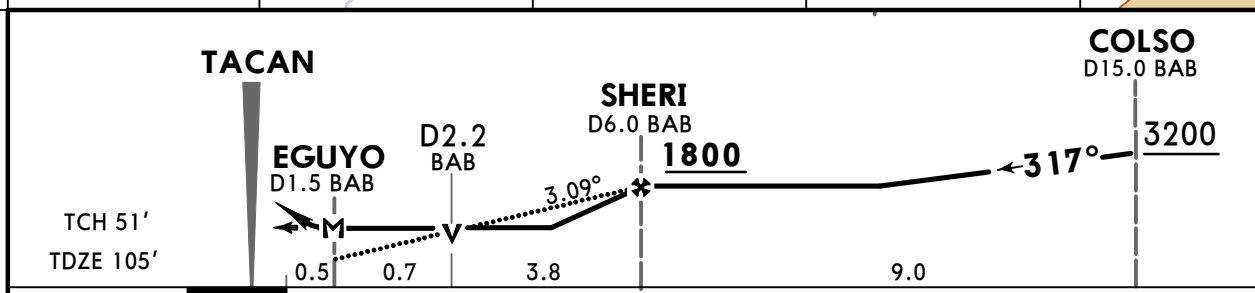
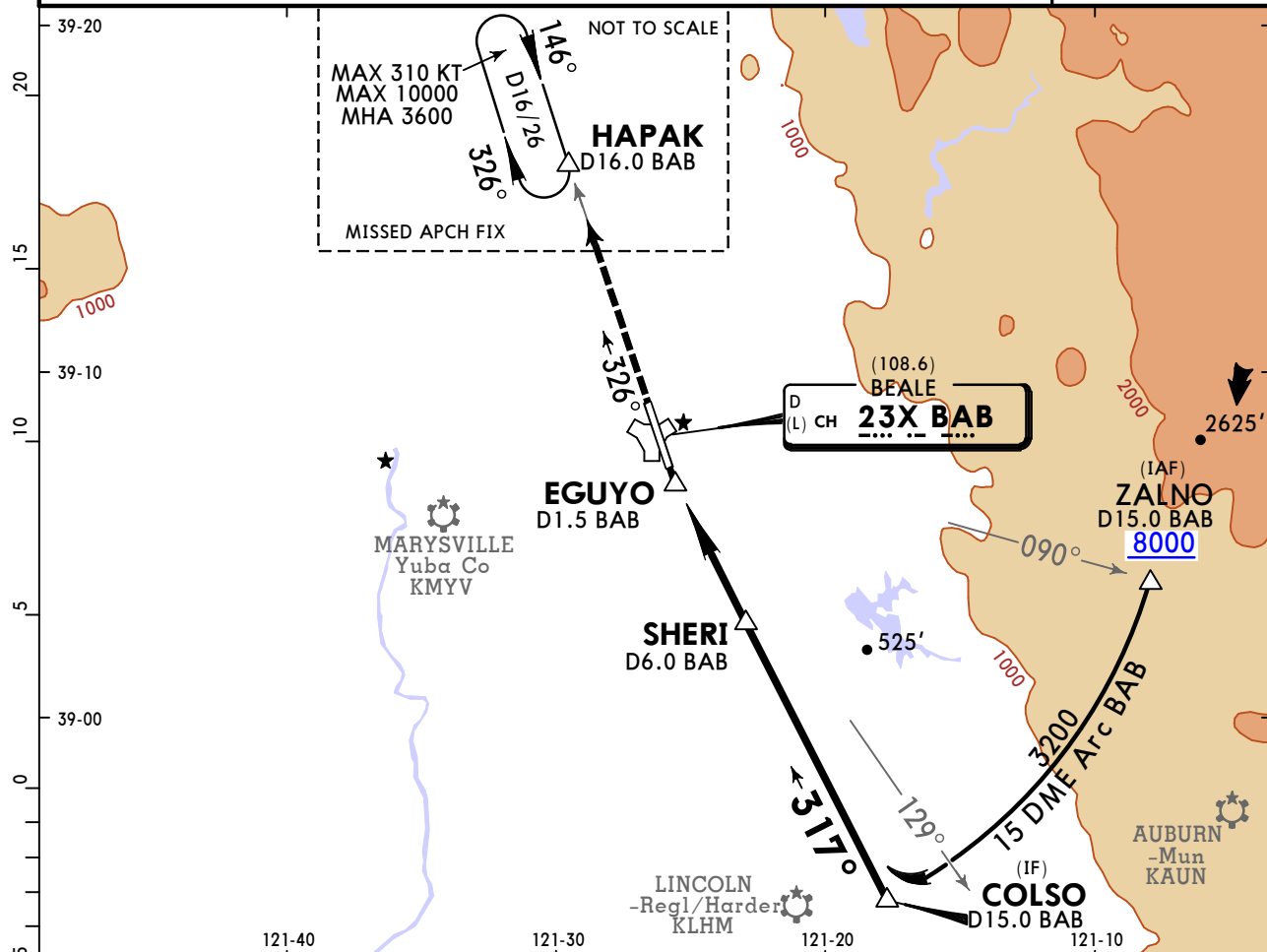
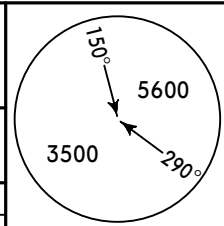
TERPS MIL (USAF) AMEND 5	Military		STRAIGHT-IN LANDING		CIRCLE-TO-LAND	
	MDA(H) 640' (527')				Not Authorized East of Rwy 15-33	
	ALS out		ALS out		Max Kts	
	A/B	NA	NA	NA	A/B	NA
	C				140	640' (527') 600'- V1 1/2
D	600'- R55 or V1		600'- V1 1/2	165	680' (567') 600'- V2	
E				200	840' (727') 800'- V2 1/2	

KBAB/BAB
MARYSVILLE, CALIF

JEPPESSEN
18 SEP 20 **(34-3)**

BEALE AFB
TACAN Y Rwy 33

BRIEFING STRIP™	*ATIS 124.55 273.5		NORCAL Approach (R) 125.4 259.1		*BEALE Tower 119.4 284.75		*Ground 121.6 257.75	
	TACAN BAB CH 23X (108.6)		Final Apch Crs 317°		SHERI 1800' (1695')		MDA(H) 540' (435')	
					Apt Elev 113'		TDZE 105'	
	MISSED APCH: Climb to 3600' intercept BAB TACAN R-326 to HAPAK/D16.0 BAB and hold.							
	Alt Set: INCHES		Trans level: FL 180			Trans alt: 18000'		
1. EMERGENCY SAFE ALT 100 NM 13,700'.								



Gnd speed-Kts	70	90	100	120	140	160	ALSIF-I PAPI	3600'	BAB CH 23X (108.6) R-326	HAPAK
Descent Angle	3.09°	383	492	547	656	875				
MAP at EGUYO										

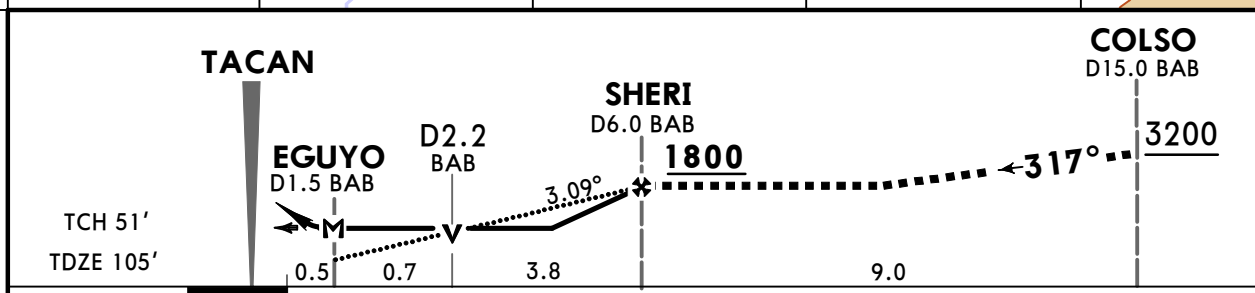
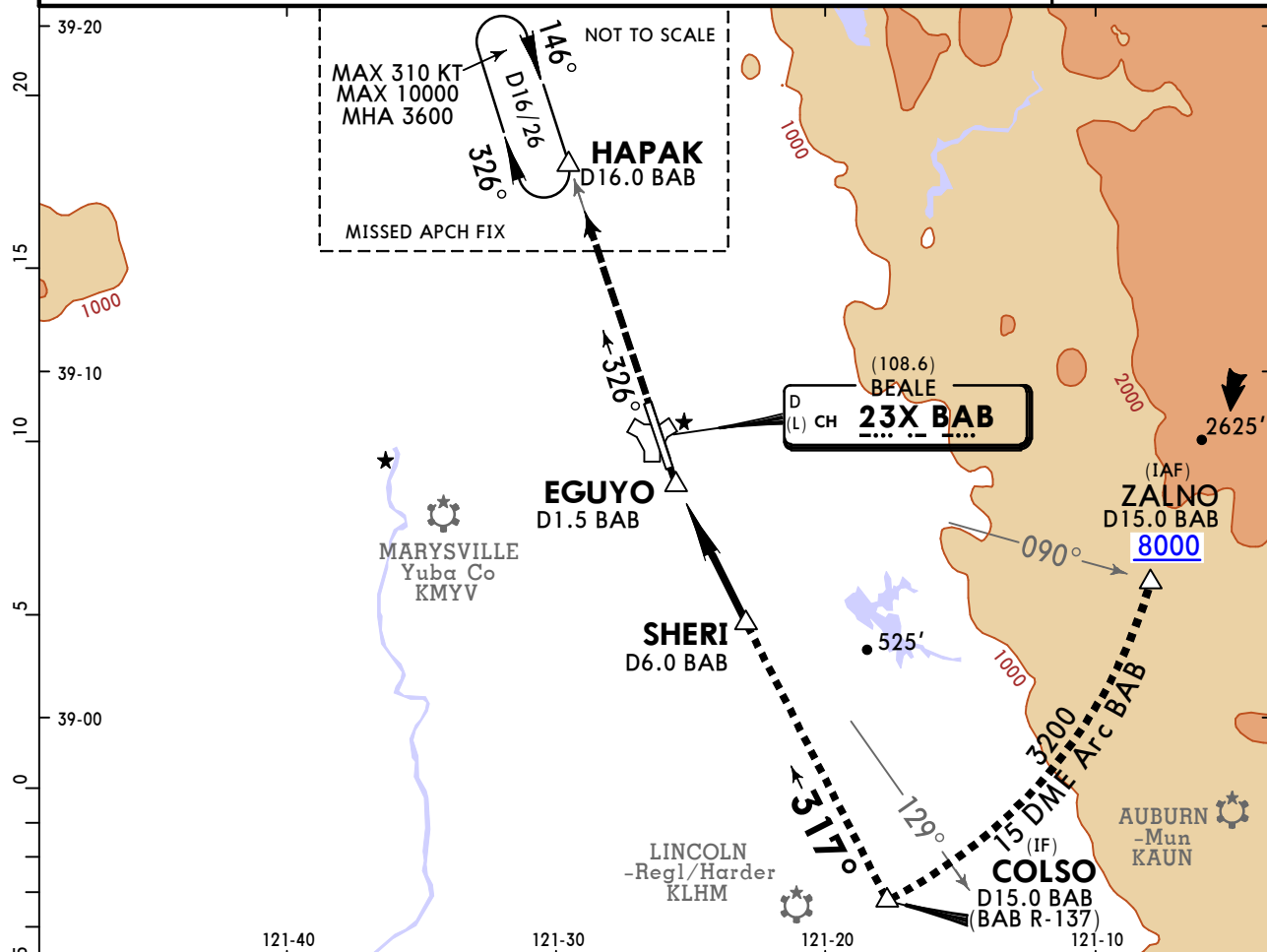
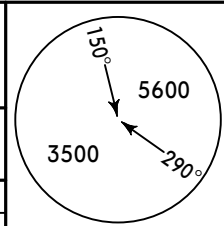
TERPS MIL (USAF) AMEND 5	Military						STRAIGHT-IN LANDING		CIRCLE-TO-LAND		
							MDA(H) 540' (435')		Not Authorized East of Rwy 15-33		
							ALS out		Max Kts	MDA(H)	
	A	500' - R24 or V1/2			500' - R55 or V1			90		600' (487') 500' - V1	
	B							120			
C							140	600' (487') 500' - V1 1/2			
D	500' - R40 or V3/4			500' - V1 1/4			165	680' (567') 600' - V2			
E							200	840' (727') 800' - V2 1/2			

KBAB/BAB
MARYSVILLE, CALIF

JEPESEN
18 SEP 20 **(34-4)** **CAT C, D & E**

BEALE AFB
HI-TACAN Z Rwy 33

*ATIS 124.55 273.5		NORCAL Approach (R) 125.4 259.1		*BEALE Tower 119.4 284.75		*Ground 121.6 257.75	
TACAN BAB CH 23X (108.6)		Final Apch Crs 317°		SHERI 1800' (1695')		MDA(H) 540' (435')	
				Apt Elev 113'		TDZE 105'	
MISSED APCH: Climb to 3600' intercept BAB TACAN R-326 to HAPAK/D16.0 BAB and hold.							
Alt Set: INCHES		Trans level: FL 180			Trans alt: 18000'		
1. EMERGENCY SAFE ALT 100 NM 13,700'.							MSA BAB TACAN



Gnd speed-Kts	70	90	100	120	140	160	ALSIF-I PAPI	3600'	BAB CH 23X (108.6) R-326	HAPAK
Descent Angle	3.09°	383	492	547	656	875				
MAP at EGUYO										

Military						STRAIGHT-IN LANDING					CIRCLE-TO-LAND									
MDA(H) 540' (435')											ALS out					Not Authorized East of Rwy 15-33				
A/B	NA					NA					Max Kts	MDA(H)								
C	NA					NA					A/B	NA								
D	500'- R40 or V3/4					500'- V1 1/4					140	600' (487') 500'- V1 1/2								
E	500'- R40 or V3/4					500'- V1 1/4					165	680' (567') 600'- V2								
	500'- R40 or V3/4					500'- V1 1/4					200	840' (727') 800'- V2 1/2								

TERPS MIL (USAF) AMEND 5

Chart changes since cycle 15-2023

ADD = added chart, REV = revised chart, DEL = deleted chart.

ACT	PROCEDURE IDENT	INDEX	REV DATE	EFF DATE
-----	-----------------	-------	----------	----------

MARYSVILLE, CA (BEALE AFB - KBAB)

TERMINAL CHART CHANGE NOTICES

No Chart Change Notices for Airport KBAB

Chart Change Notices for Country USA

Type: Gen Tmnl

Effectivity: Temporary

Begin Date: Immediately

End Date: Until Further Notice

Due to a change of the FAA's statute mile equivalent value for RVR, approach charts with a visibility of RVR 55 or 1 1/4 should be RVR 55 or 1.

Type: Gen Tmnl

Effectivity: Temporary

Begin Date: Immediately

End Date: Until Further Notice

ILS Procedures RVR 1800 Statute Mile Equivalent-U.S. FAA Airports On a number of ILS approach procedures at U.S. FAA airports, the published landing visibility value of RVR 1800 depicts a Statute Mile equivalent value of 3/8 Statute Mile. According to FAA FAR and AIM publications, the Statute Mile equivalent for RVR 1800 should be 1/2 Statute Mile Beginning with the revision dated 20 May 2016 affected U.S. ILS approach charts will be updated to depict the appropriate Statute Mile equivalent visibility of 1/2 Statute Mile.

Type: Gen Tmnl

Effectivity: Temporary

Begin Date: Immediately

End Date: Until Further Notice

MALSR & SSALR RAIL out Lighting Condition - U.S. FAA Locations The FAA has confirmed that for MALSR and SSALR approach light systems, the RAIL out, or partial system condition, is not applicable when determining landing visibilities When any component of a MALSR or SSALR approach light system is inoperative, such as RAIL out, the landing visibilities should be determined as if the entire lighting system were inoperative (ALS out). Therefore, the RAIL out visibility column should be disregarded.